

# Stony Pointe

105 Stony Pointe Way Suite #221  
Strasburg, VA 22657

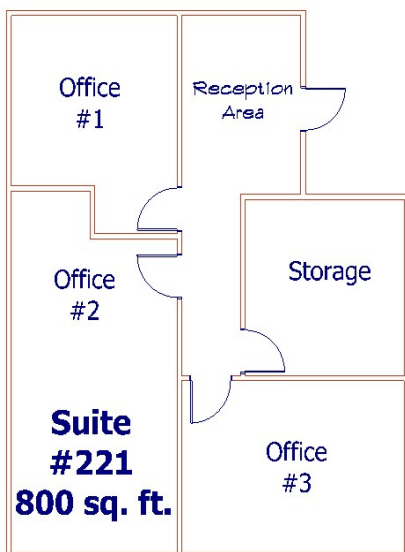
**\$750/month**

**Space Layout includes:**

- 800 sq. ft.
- High quality standard finishes
- 3 Private Offices
- 1 Storage/ Break Room
- Reception area
- Common Area Restroom
- Utilities included in CAM fee

**Building Information:**

- Built in 2005
- 28,800 sq. ft.
- Premier Commercial Building
- High Quality Craftsmanship
- Features Office, Medical, & Service Spaces
- Handicap Accessible
- Ample Parking
- Great Visibility
- High Traffic Location
- Located across from 2 factories



*For more information, contact:*

**Linda G. Toothman**

**540.459.4099**

**[info@alantoothman.com](mailto:info@alantoothman.com)**

**Toothman**  
INVESTMENTS LLC  
[www.alantoothman.com](http://www.alantoothman.com)